



*Test of FIL-Reset 15000 presurefilter  
with built-in 24 watt UV*

*Start on 12 July 2011*

*Pond 2 x 4 meter og 70 cm deep  
Resident 5 terrapins & 26 goldfish*



**The test is conducted  
in and of a customer**

**to document the impact and functionality**





## Test of FIL-Reset 15000

15 July 2011 The algae has changed colour, they have become darker.  
2 turtles sold, there is now "only" 3 turtles and 26 goldfish back.

*Note: Turtles mess a lot extra*





## *Test of FIL-Reset 15000*

20 July 2011 Lighter water, the fish can now be discerned from 10 to 15cm. Water depth.

*Amazingly when the filter has only been active for 8 days*





## *Test of FIL-Reset 15000*

22 July 2011 Today we have tried and clean the filter of sludge and the first dead algae.

Nice easy with turning the handle - we turned off the filter and the pump was 20-30 laps and paralyzed out, waste water was almost completely black.





### *Test of FIL-Reset 15000*

On the filter sludge drain pipe is by default a ball valve which ensures that the filter is tight when the function in ordinary. operation.

*The extra ball valve must be purchased as optional equipment on all other pressure filters.*





### *Test of FIL-Reset 15000*

The extra valve makes it easy and pins waste water into a watering can so the plants can get the good fertilizer and can possibly. attaching a hose so the water can be discharged directly to a plant bed.

We lit the pump to slamme filter out and let the water run - for it again was clean.





### *Test of FIL-Reset 15000*

When the filter was now cleaned - we should just turn the function knob so drove filter again on the pond.

There is a small float stopper inside the glass that shows when the filter needs to be cleaned, the plug had not yet come into view, but we could see the water had changed colour, which means many of the algae were removed from the pond and ended up in the ultra chic filter.

*The test continues ... ..*





## *Test of FIL-Reset 15000*

26 July 2011 It has rained a lot the last week, so the filter has a new water and work with, so the test will probably take a little extra time.

*The fish are now becoming apparent... GLORIOUS*







## Test of FIL-Reset 15000

26 July 2011 We clean the filter today for the second time and the water is dark brown again.

*Praise for the filter - unbelievable what it has recorded and composted.*





## *Test of FIL-Reset 15000*

Cunning detail, if you have children or other pill fingers:  
The handle can be removed.

*FIL-Reset filter is not just clever - but thoughtful  
and effective, and it makes water cleaning  
to a breeze!*





## *Test of FIL-Reset 15000*

**2 August 2011** The turtles are having fun in the sun today, and we can now see down to the bottom of the pond.

*Fish and turtles are flourishing*





## Test of FIL-Reset 15000

2 August 2011 The water is now prettier and prettier for each passing day - incredible what power the filter already had.

*It's just great to see the effectiveness*

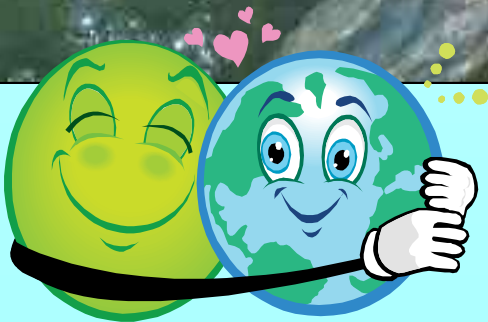




## Test of FIL-Reset 15000

4 August 2011 The water is now almost become crystal clear and becomes more beautiful every day.

*There is nothing as good as a garden pond with clean and crystal clear water!*





## Test of FIL-Reset 15000

6 August 2011 We finish the test today with beautiful and crystal clear water.

*Unbelievable but true - on less than 1 month the FIL-Reset has transformed our mud pond to a crystal clear pond*





## *Test of FIL-Reset 15000*

**6 August 2011** The water is now so clean that we must note that the filter is definitely approved - and can be warmly recommended.

The test took a little longer than expected, but we have tested a very dirty pond in much rainfall and the summer's sunny and extremely hot weather.





## Test of FIL-Reset 15000

Completed 6 August 2011

We highly recommend this pressure filter, especially when compared to all other forms of pressure filter on the market.



*We have to note the following:*

- The filter is very effective and easy to use and maintain.
- It requires no effort, work or rainwear to clean the filter.
- There is a large built UVC unit (24W) mounted in the filter.
- Pour Stopper which indicate when it is time for cleaning.
- Sludge removal comes with safety ball valve.
- Very easy cleaning with rotary handle.
- Comes with built-in flow indicator.

★ ★ ★ ★ ★ 5 star out of 5 possible

